

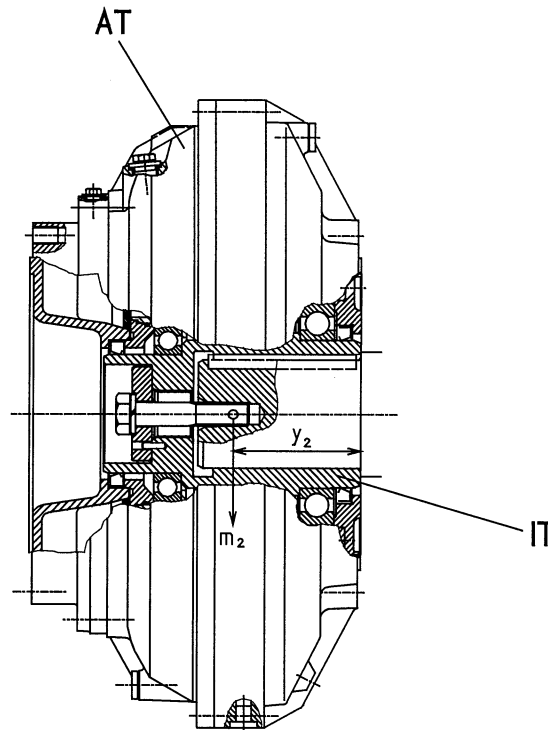
VTC ²⁾ size/type	A	C	D	E	J	K ₁₆	M	Q	R	S	T	Z	without insert sleeve			with insert sleeve	
													d ₂ min.	d ₂ max.	L ₂ ¹⁾	d ₂ max.	L ₂
366 TVE	225	97	424	158	228	195	M 12	G1	3	-	18	8	35	65	120	55	120
422 TVG	257	103	470	182	265	220	M 12	G1-1/4	3.5	-	18	8	45	80	135	65	135
487 TVG	297	46.5	556	200.5	310	265	M 12	G1-1/4	3	480	19	12	45	90	155	80	155
562 TVC	333	46	634	220	360	315	M 12	G1-1/2	3	556	19	16	50	110	170	90	170
650 TVC	384	67	740	263	420	360	M 16	G1-1/2	3	649	21	16	50	120	200	100	200
750 TVC	440	65	846	288	480	420	M 16	G2-1/4	4	742	21	20	70	135	240	110	240
866 TVB	493	75	978	326	555	485	M 20	G2-1/4	5	862	25.5	12	70	150	265	120	265
1000 TVB	547	64	1118	347	650	580	M 20	G2-1/4	5	990	28	16	70	160	280	-	-
1150 TVA	670	98	1295	472	840 ³⁾	770	M 27	G2-1/4	9 ³⁾	1140	30	16	70	180	320	-	-

We reserve the right to make dimensional and constructional changes. Dimensions in mm
Fixing bolt: it is standard with thread to DIN 332, Sheet 2.

- 1) Bore depth is constantly according to "L₂".
- 2) All values also apply to types TVY and TVF. For functional reasons, an outer wheel drive is condition for these coupling types.
- 3) For size 1150, "R" is carried out set back as inner centering H7.

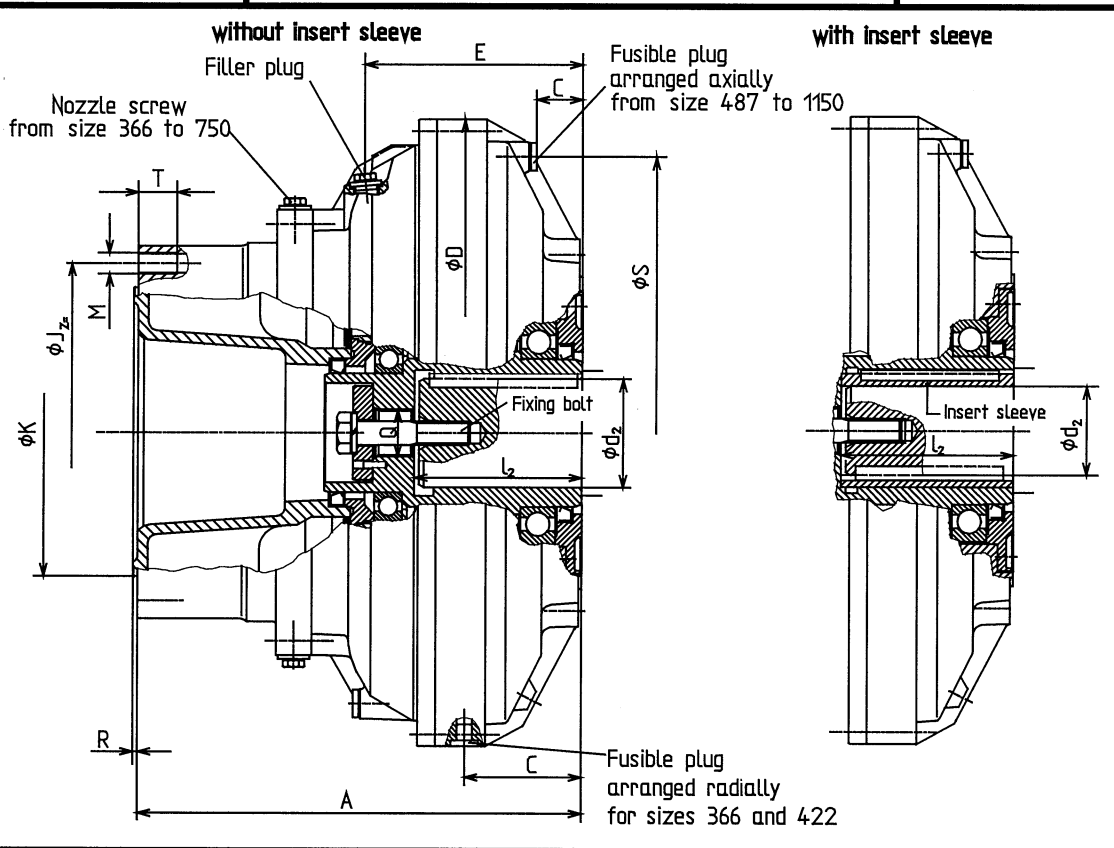
Distribution: File V0

Replacing : ca28.4 (edition: 02/94)
Originating from:



VTC	max. Oil fill l 2)	Total weight 4) kg	Weight 4)		Massmoment of inertia 4)		Assembly plan Drawing No. 3600-
			VTK		(inner part)	(outer part)	
			m ₂ kg	y ₂ mm	IT kg m ²	AT kg m ²	
366 TVE	7	40	40	110	0.135	0.485	018970
422 TVG	12	57	57	115	0.285	0.835	034952
487 TVG	18	80	80	135	0.590	1.640	018716
562 TVC	28	122	122	140	1.280	3.230	019166
650 TVC	42	180	180	160	2.600	6.650	019270
750 TVC	64	275	275	180	5.300	12.900	
866 TVB	105	415	415	210	11.200	26.100	034734
1000 TVB	170	615	615	240	23.400	50.400	034788
1150 TVA	235	900	900	300	50.500	94.500	034950

4) Values with max. oil fill



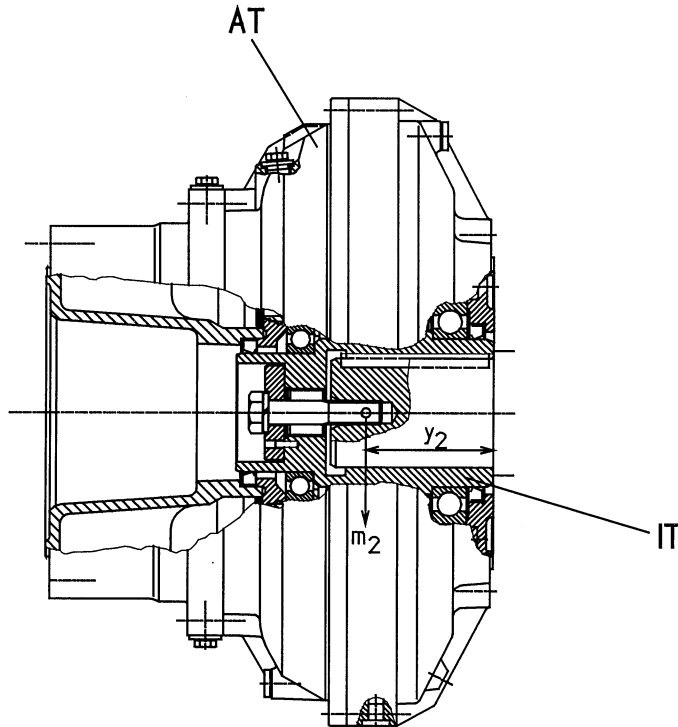
VTC size/type 2)														without insert sleeve		with insert sleeve	
	A	C	D	E	J	K ₁₆	M	Q	R	S	T	Z	d ₂ min.	d ₂ max.	l ₂ ¹⁾	d ₂ max.	l ₂
366 TVVE	295.5	97	424	158	228	195	M 12	G1	3	-	18	8	35	65	120	55	120
422 TVVG	335	103	470	182	265	220	M 12	G1-1/4	3.5	-	18	8	45	80	135	65	135
487 TVVG	382	46.5	556	200.5	310	265	M 12	G1-1/4	3	480	19	12	45	90	155	80	155
562 TVVE	428	46	634	220	360	315	M 12	G1-1/2	3	556	19	16	50	110	170	90	170
650 TVVC	494	67	740	263	420	360	M 16	G1-1/2	3	649	21	16	50	120	200	100	200
750 TVVC	567	65	846	288	480	420	M 16	G2-1/4	4	742	21	20	70	135	240	110	240
866 TVVB	641	75	978	326	555	485	M 20	G2-1/4	5	862	25.5	12	70	150	265	120	265
1000 TVVB	686	64	1118	347	650	580	M 20	G2-1/4	5	990	28	16	70	160	280	-	-
1150 TVVB	883	98	1295	472	840	770 ³⁾	φ 30	G2-1/4	9 ³⁾	1140	35	16	70	180	320	-	-

We reserve the right to make dimensional and constructional changes. Dimensions in mm
Fixing bolt: it is standard with thread to DIN 332, Sheet 2.

- 1) Bore depth is constantly according to "l₂".
- 2) All values also apply to types TVVY and TVVF. For functional reasons, an outer wheel drive is condition for these coupling types.
- 3) For size 1150, "R" is carried out set back as inner centering H7.

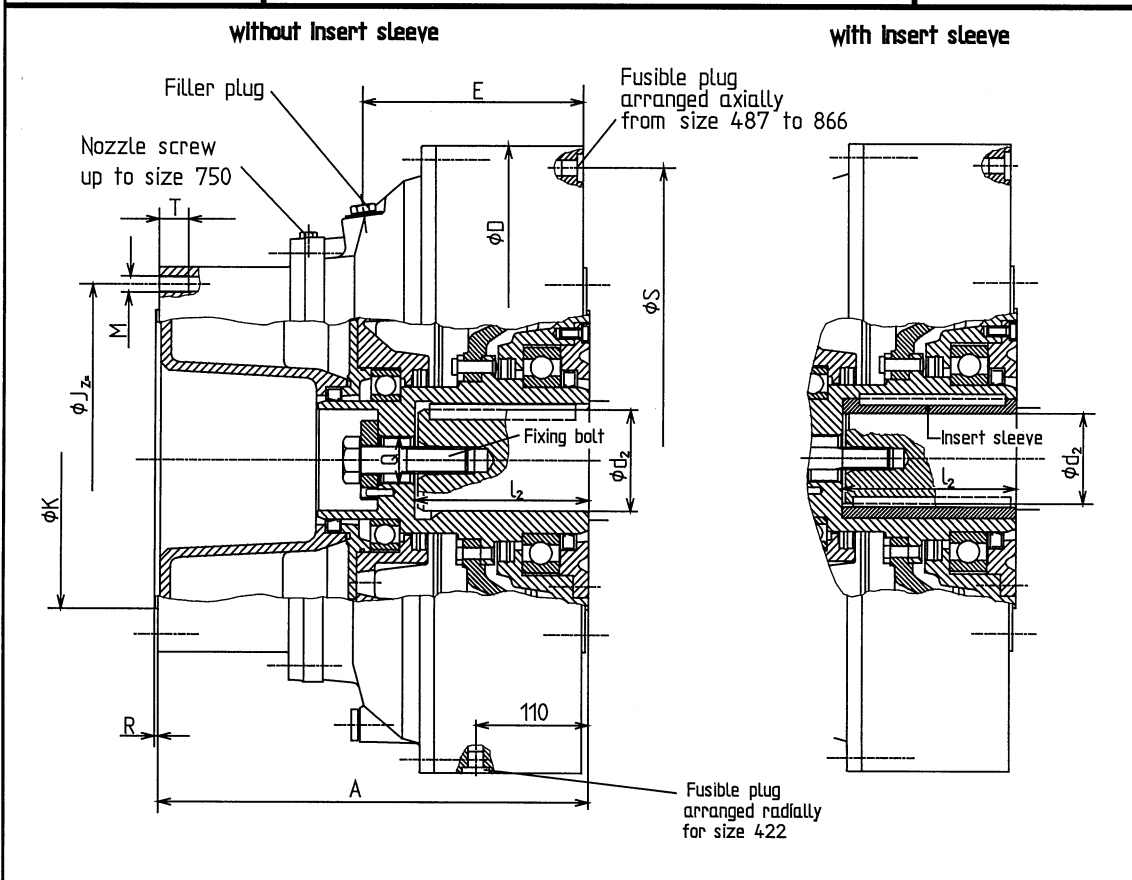
Distribution: File V0

Replacing: ca39.1 (Edition: 02/94)
Originating from:



VTC size/type 2)	max. oil fill l	Total weight 4) kg	Weight 4)		Massmoment of inertia 4)		Assembly plan Drawing No. 3600-
			VTC		(inner part)	(outer part)	
			m ₂ kg	y ₂ mm	IT kg m ²	AT kg m ²	
366 TVVE	8	42	42	128	0.140	0.531	018981
422 TVVG	13.5	60	60	142	0.300	0.936	034937
487 TVVG	21	88	88	158	0.610	1.886	018992
562 TVVE	32	132	132	162	1.325	3.616	019179
650 TVVC	48	195	195	191	2.700	7.423	034988
750 TVVC	70	295	295	207	5.500	14.376	-
866 TVVB	115	440	440	244	11.600	28.708	034736
1000 TVVB	190	650	650	214	19.900	69.400	034790
1150 TVVB	265	990	990	405	41.000	119.000	034989

4) Values with max. oil fill



VTC size/type 2)	A	D	E	J	K ₁₆	M	Q	R	S	T	Z	without insert sleeve			with insert sleeve	
												d ₂ min.	d ₂ max.	l ₂ ¹⁾	d ₂ max.	l ₂
422 TVVSG	335	470	182	265	220	M 12	G1-1/4	3.5	434	19	8	45	80	135	65	135
487 TVVSG	382	556	200.5	310	265	M 12	G1-1/4	3	518	19	12	45	90	155	80	155
562 TVVSC	428	660	220	360	315	M 12	G1-1/2	3	615	19	16	50	110	170	90	170
650 TVVSC	494	761	263	420	360	M 16	G1-1/2	3	712	21	16	50	120	200	100	200
750 TVVSC	567	877	288	480	420	M 16	G2-1/4	4	815	21	20	70	135	240	110	240
866 TVVSB	641	1017	326	555	485	M 20	G2-1/4	5	946	25.5	12	70	150	265	120	265

We reserve the right to make dimensional and constructional changes
Fixing bolt: it is standard with thread to DIN 332, Sheet 2.

Dimensions in mm

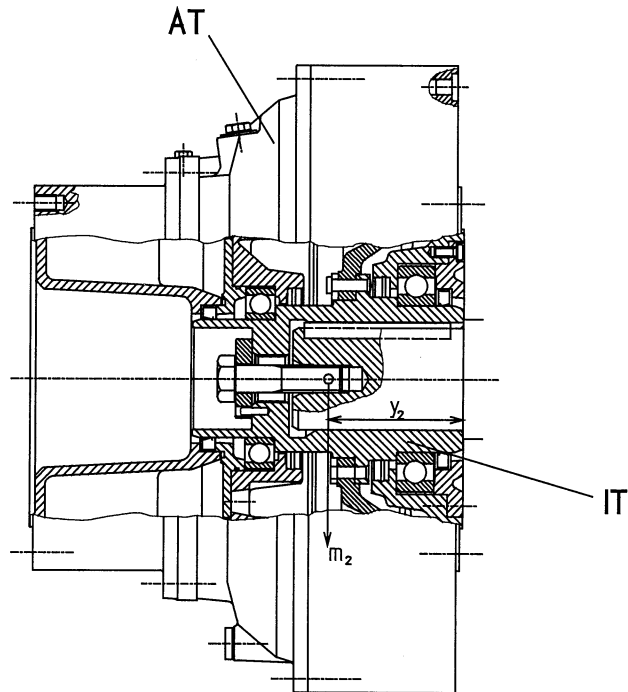
For functional reasons, an outer wheel drive is condition for these coupling types.

1) Bore depth is constantly according to "l₂".

2) All values also apply to types TVVYS and TVVFS.

Distribution: File V0

Replacing: ca53.2 (Edition: 02/94)
Originating from:



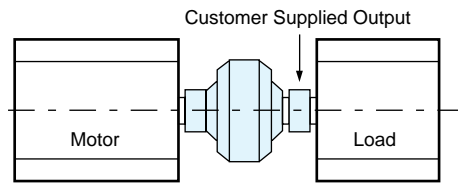
VTC size/type ²⁾	max. oill fill l	Total weight ³⁾ kg	Weight ³⁾		Massmoment of inertia ³⁾		Assembly plan Drawing No. 3600-
			VTC		IT	AT	
			m ₂ kg	y ₂ mm	kg m ²	kg m ²	
422 TVVSG	14.5	65	65	113	0.334	1.042	034957
487 TVVSG	23.5	95	95	137	0.736	2.167	019072
562 TVVSC	37.0	142	142	140	1.508	4.453	019073
650 TVVSC	60.0	212	212	163	3.029	9.248	034955
750 TVVSC	90.0	313	313	187	5.100	19.557	
866 TVVSB	150.0	490	490	230	11.600	39.620	034956

³⁾ Values with max. oill fill

Sizes 7.0, 9.4, 12.4

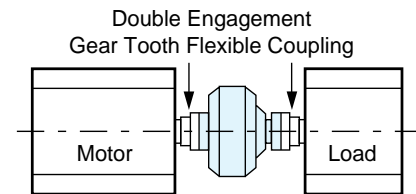
Configuration

HCF



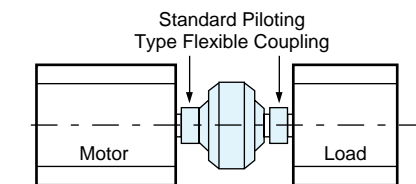
Consists of Model HC and input group. The input group is finish bored to fit standard NEMA B motor shafts. The optional output groups available (HCM, HBM) are shown on this page or the HCF output group must be supplied by the customer. Consult engineering for details.

HCM



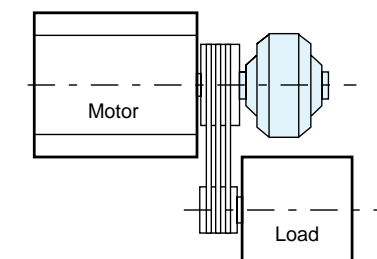
The Model HCM Fluid Coupling is a complete unit with both input and output flanges. It is intended for installation between two halves of a double engagement gear tooth flexible coupling which is customer supplied.

HBM



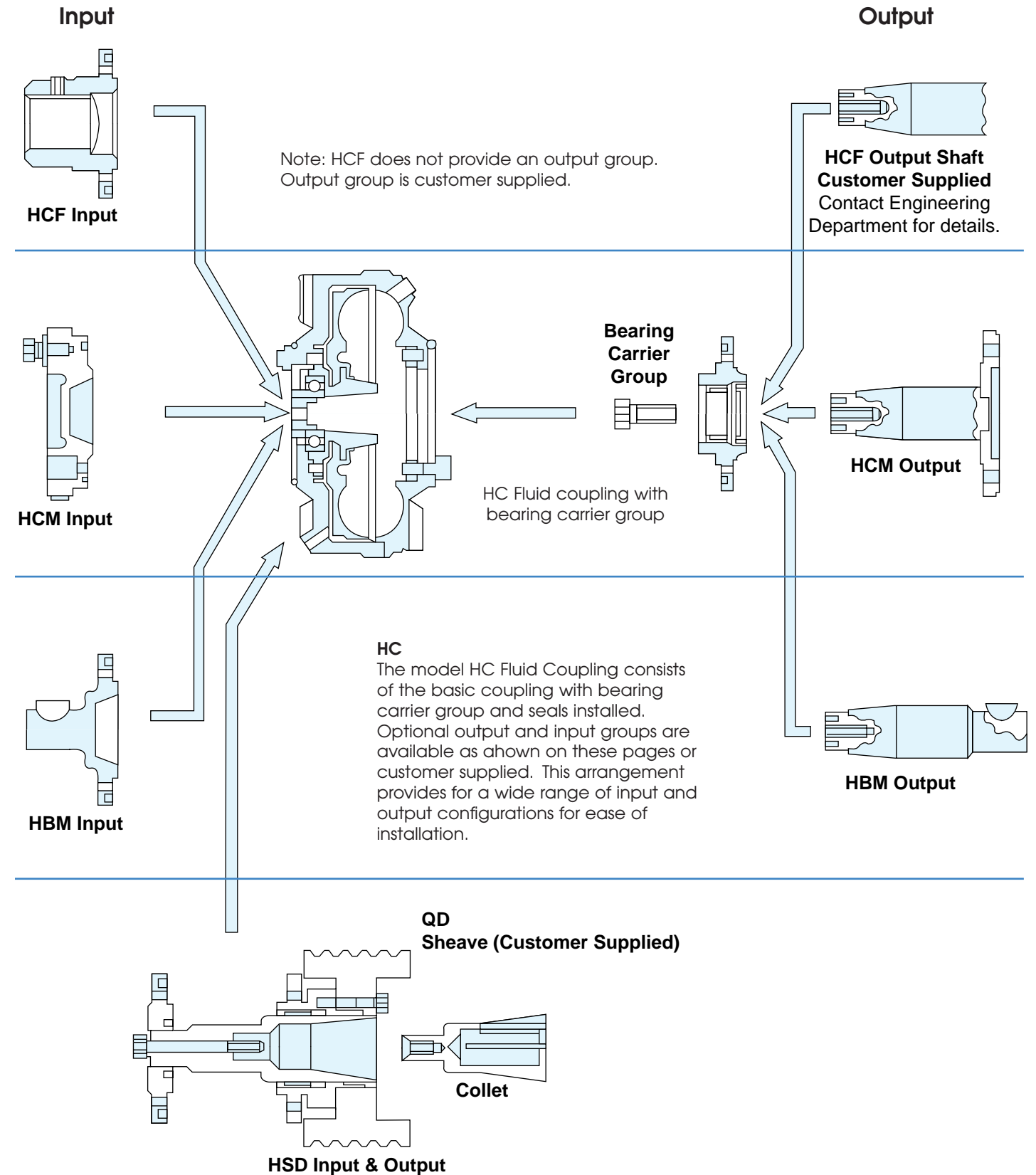
This coupling is a complete unit with a straight input and output shaft. It is installed between two piloting type flexible couplings supplied by the customer.

HSD



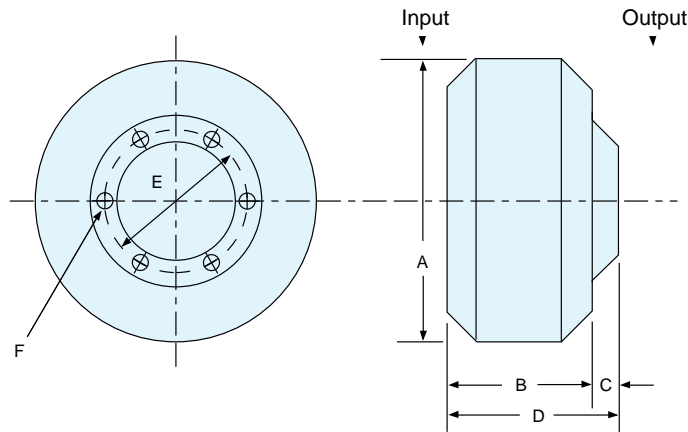
The Model HSD Fluid Coupling consists of a basic fluid coupling, input and output group, and a standard customer supplied QD type sheave. Hydro-sheave couplings provide minimal overhung loads for parallel (belt-driven) applications. The sheave is mounted on a coupling installed on the end of a driveshaft.

Mesur-Fil Couplings can be installed very quickly and easily utilizing a slotted collet for mounting on the motor shaft instead of the center bolt that is most commonly used with other sheave drives. Unlike the center bolt, the slotted collet requires no drilling and tapping of the end of the motor shaft. The slotted collet is finished bored to fit standard NEMA B motor shaft dimensions. Available bore sizes are found elsewhere in this brochure.



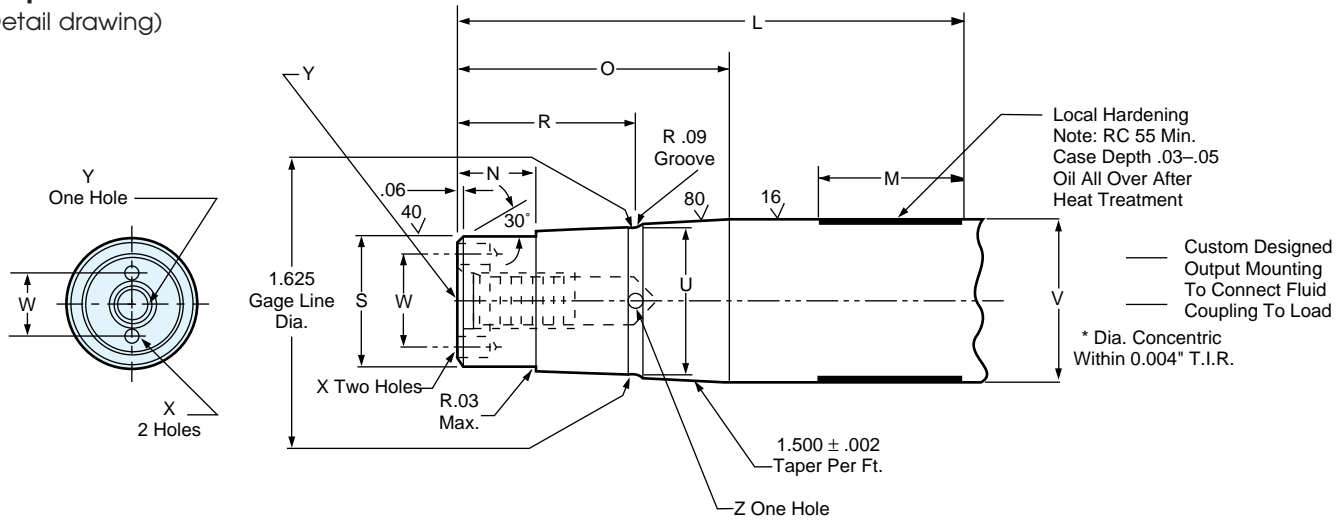
For Custom Applications

Sizes 7.0 - 12.4



Size	A	B	C	D	E	F	Wt. Lb. Less Oil	Oil US Oz. Max
7.0	7.81	3.67	.56	4.23	3.188	17/64	10.1	27.6
9.4	10.25	4.70	.77	5.47	4.250	25/64	20.5	65
12.4	13.50	5.98	.82	6.80	5.650	25/64	38.0	150

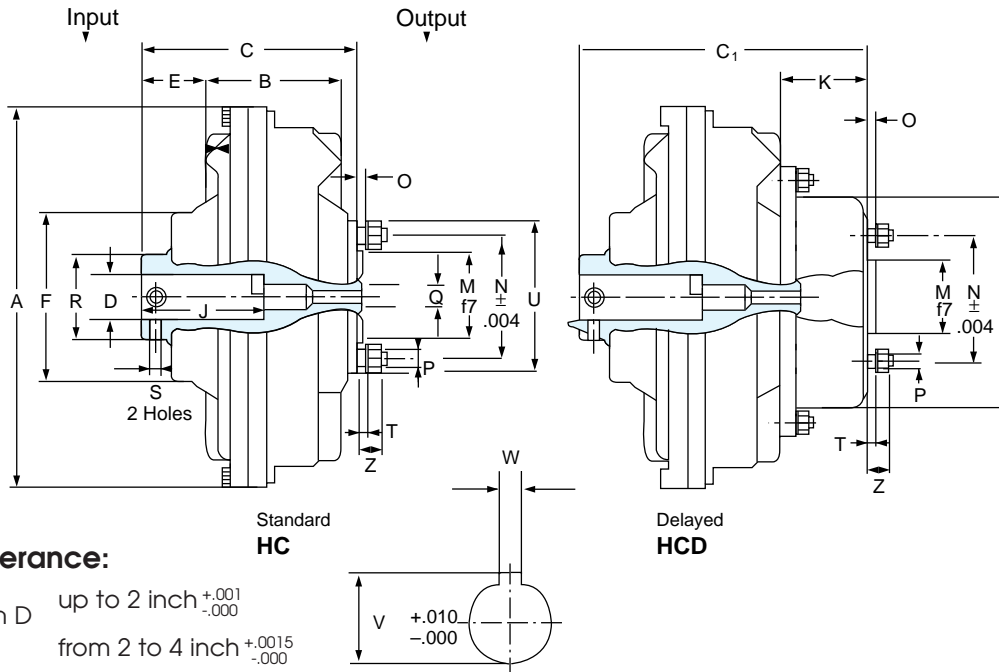
Output Shaft (Detail drawing)



Size	L	M	N	O	R	S	U	V	W	X	Y	Z
7.0	4.17	1.50	1.270	1.91	.60	.9845	1.124	1.250	.750	9/64 x .26	1.10	.60
						.9839	1.116	1.249				
9.4	5.42	1.50	1.905	2.90	.83	1.3782	1.577	1.850	1.062	13/64 x .50	.96	.80
						1.3776	1.589	1.749				
12.4	6.75	1.80	2.05	3.156	.90	1.5746	1.785	2.000	1.125	13/64 x .50	.96	.90
						1.5750	1.777	1.994				

Sizes 15 - 29

(For size 34, see next page)



Tolerance:

Dim D up to 2 inch $\begin{smallmatrix} +.001 \\ -.000 \end{smallmatrix}$
 from 2 to 4 inch $\begin{smallmatrix} +.0015 \\ -.000 \end{smallmatrix}$

Dim W up to .500 inch $\begin{smallmatrix} +.002 \\ -.000 \end{smallmatrix}$
 from .625 to 1 inch $\begin{smallmatrix} +.003 \\ -.000 \end{smallmatrix}$

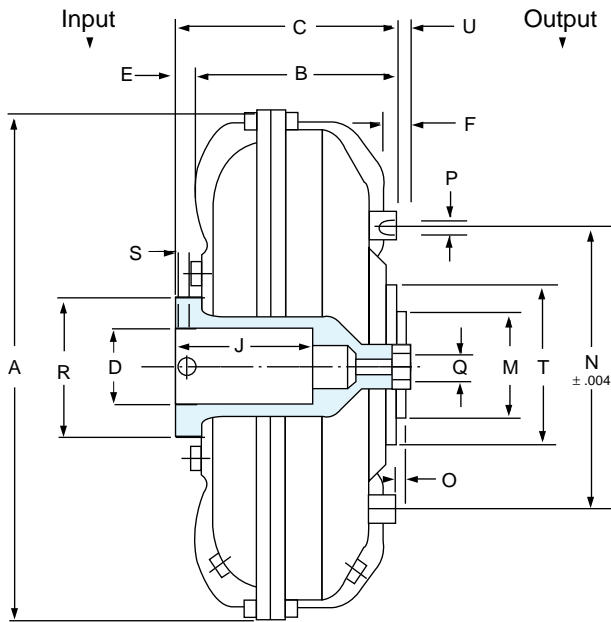
Size	Wt. Less Oil	Oil US gal Max
15	81.5	2.020
15	▲ 90.3	▲ 2.272
17	112.4	3.090
17	▲ 125.6	▲ 3.487
19	127.8	3.750
19	▲ 141	▲ 4.227
21	191.8	5.020
21	▲ 214	▲ 6.076
24	231.5	7.500
24	▲ 253.5	▲ 8.243
27	355	11.09
27	▲ 394.6	▲ 13.21
29	472	14.531
29	▲ 512	▲ 16.645

Size	D	J	W	V	A	B	C	C ₁	E	F	I	K	M	N	O	P		Q	R	S	T	U	Z
																Nr.	Dia.						
15	2.875	7.000	.750	2.992	18.110	5.945	8.898	11.575	2.205	7.992	10.039	3.425	3.5433	3.3543	.197	8	M10	7/8 9 UNC	3.976	5/8 11 UNC	.315	6.142	.748
15	2.375	5.625	.625	2.651	18.110	5.945	8.898	11.575	2.205	7.992	10.039	3.425	3.5433	3.3543	.197	8	M10						
15	2.125	5.000	.500	2.350	18.110	5.945	8.898	11.575	2.205	7.992	10.039	3.425	3.5433	3.3543	.197	8	M10						
17	3.375	8.250	.875	3.635	20.472	6.693	9.764	12.913	2.441	8.858	12.992	3.779	4.9212	6.2992	.197	12	M10	4.961			.315	7.087	.748
17	2.875	7.000	.750	3.205	20.472	6.693	9.764	12.913	2.441	8.858	12.992	3.779	4.9212	6.2992	.197	12	M10						
19	3.375	8.250	.875	3.635	22.244	7.480	9.764	12.913	1.653	8.858	12.992	3.779	4.9212	6.2992	.197	12	M10	1-1/4 7 UNC	4.961	3/4 10 UNC	.315	7.087	.748
19	2.875	7.000	.750	3.205	22.244	7.480	9.764	12.913	1.653	8.858	12.992	3.779	4.9212	6.2992	.197	12	M10						
21	3.875	8.500	1.000	4.106	24.409	8.071	11.260	15.195	2.795	9.842	15.748	4.330	6.2992	8.9764	.197	8	M14	5.354			.551	10.039	1.181
21	3.375	8.250	.875	3.706	24.409	8.071	11.260	15.195	2.795	9.842	15.748	4.330	6.2992	8.9764	.197	8	M14						
24	3.875	8.500	1.000	4.106	27.953	9.015	11.260	15.195	1.850	9.842	15.748	4.330	6.2992	8.9764	.197	8	M14						
27	4.750	8.500	1.250	5.109	30.708	10.944	12.677	17.321	1.220	12.401	20.866	5.157	7.874	10.826	.236	8	M16	1-3/4 5 UNC	7.283	7/8 9 UNC	.551	12.125	1.299
29	5.250	9.500	1.250	5.617	33.858	12.007	13.740	18.386	1.220	13.780	20.866	5.157	7.874	10.826	.236	8	M16						
34	For Size 34 see page 148.																						

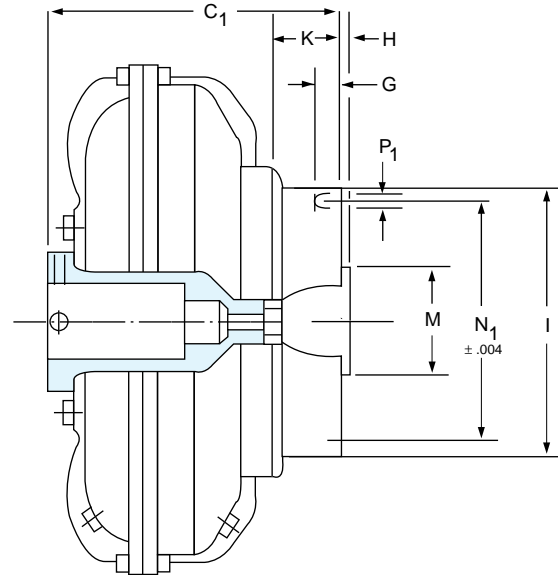
- ▲ HCD
- Max Bore
- With Reduced Depth Keyway

For Custom Applications

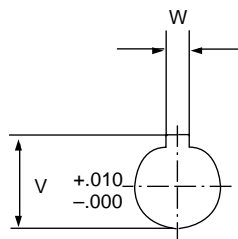
Size 34



Standard
HC



Delayed
HCD



Size	D	J	W	V	A	B	C	P		N	O	E	F	G	H
								Nr.	Dia.						
34	5.938	10.438	1.500	6.346	39.370	14.881	15.24	12	M14	22.440	.236	1.732	.944	.866	.28

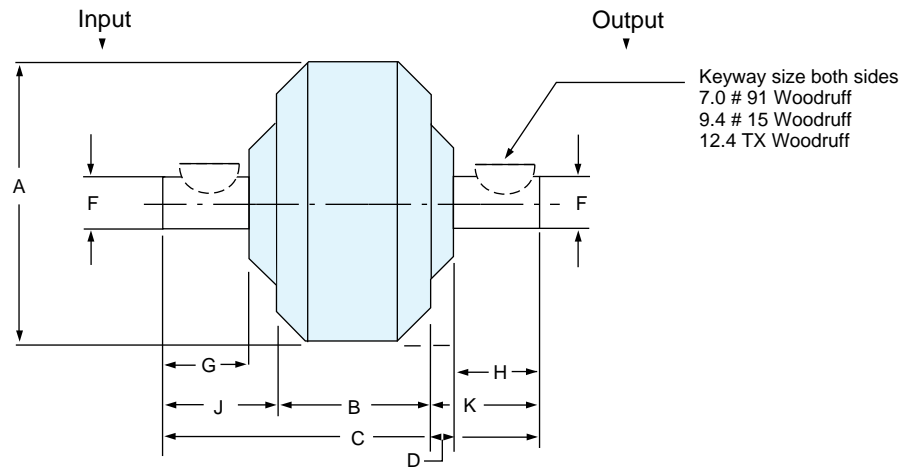
K	I	M	Q	R	S		T	C1	P ₁		N ₁	U	Wt. Lb Less Oil	Oil US Gal. Max.
					Nr.	Dia.			Nr.	Dia.				
5.157	20.866	7.874	1-3/4 5 UNC	9.84	2	1 8 UNC	12.125	20.39	10	M16	18.897	.748	743 ▲ 776	21.8 ▲ 24.5

- ▲ HCD
- Max Bore
- With Reduced Depth Keyway

Model HBM

For Shaft-to-Shaft Applications

Sizes 7.0-12.4



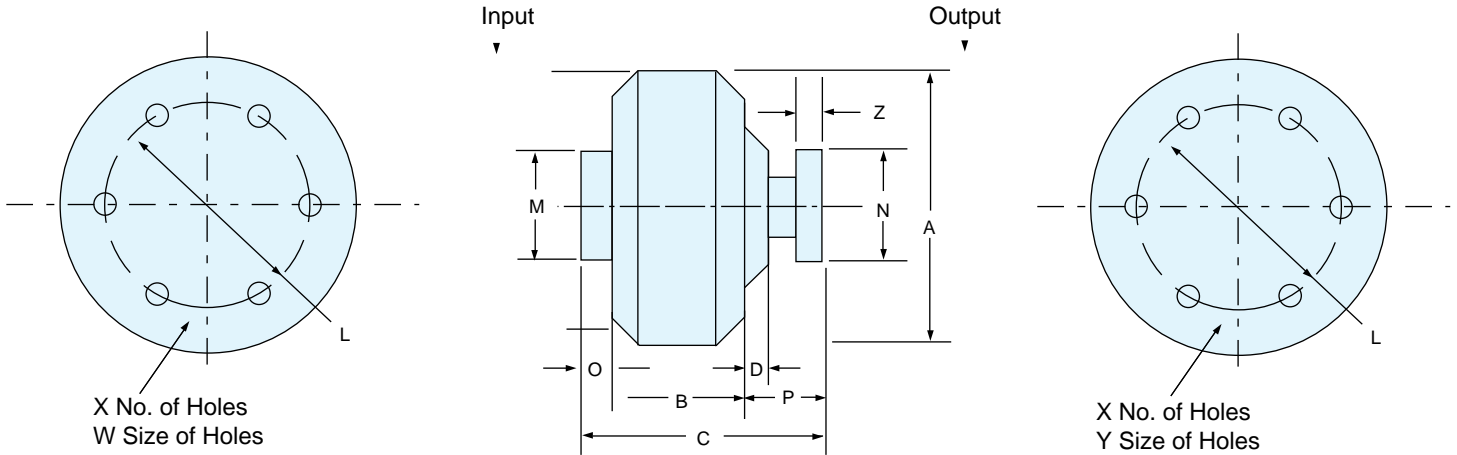
Size	A	B	C	D	F	G	H	J	K	Wt. Lb. Less Oil	Max. Oz.
7.0	7.81	3.67	8.25	.56	1.000 .999	1.62	1.62	2.34	2.24	12.65	27.6
9.4	10.25	4.70	10.89	.77	1.250 1.249	2.06	2.12	3.10	3.09	27.70	65
12.4	13.50	5.98	13.67	.82	1.625 1.624	2.12	2.75	3.88	3.88	51.07	150

Single Flexing Coupling	
7.0	AJ15*
9.4	AJ30*
12.4	AJ30*

* Refers to TB Woods Form-Flex couplings

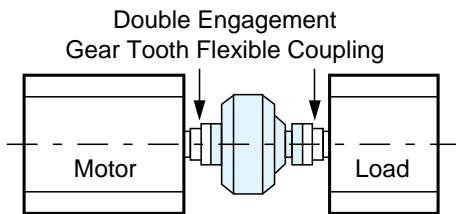
For Flexible Gear Couplings with Shrouded Bolts

Sizes 7.0-12.4



Size	A	B	C	D	L	M	N	O	P	W	X	Y	Z	Wt. Lb. Less Oil	Oil Max Oz.	WR ² Lb. Ft. ²		Gear Coupling Size
																Outer	Inner	
7.0	7.81	3.67	5.98	.56	3.75	4.70	4.56	1.10	1.21	1/4-20 .56 Deep	6	.254 .256	3/16	16.10	27.6	.42	.10	1
9.4	10.25	4.70	7.49	.77	4.812	5.90	6.00	1.14	1.65	3/8-16 .65 Deep	8	.380 .382	1/4	32.25	65	1.27	.51	1-1/2
12.4	13.50	5.98	8.67	.82	4.812	6.85	6.00	1.14	1.55	3/8-16 .74 Deep	8	.380 .382	1/4	53.25	150	4.12	1.33	1-1/2

HCM



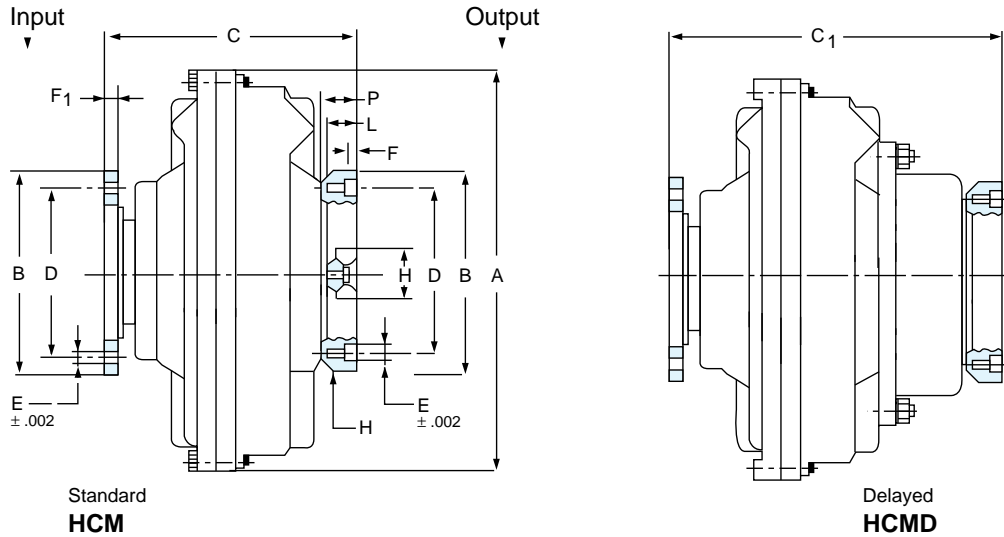
The Model HCM Fluid Coupling is a complete unit with both input and output flanges. It is intended for installation between two halves of a double engagement gear tooth flexible coupling which is customer supplied.

Size	Manufacturer	Model	Maximum Bore	Diameter of Shrouded Bolt Circle
7.0	Waldron	1W	1.63	3.750
	Poole	MXB 1	1.63	3.750
9.4 and 12.4	Amerigear	201.5	2.38	4.812
	Waldron	1.5 W	2.19	4.812
	Poole	MXB 1.5	2.19	4.812

Note: Gear couplings must be with Shrouded Bolts!

For Flexible Gear Couplings with Shrouded Bolts

Sizes 15-34

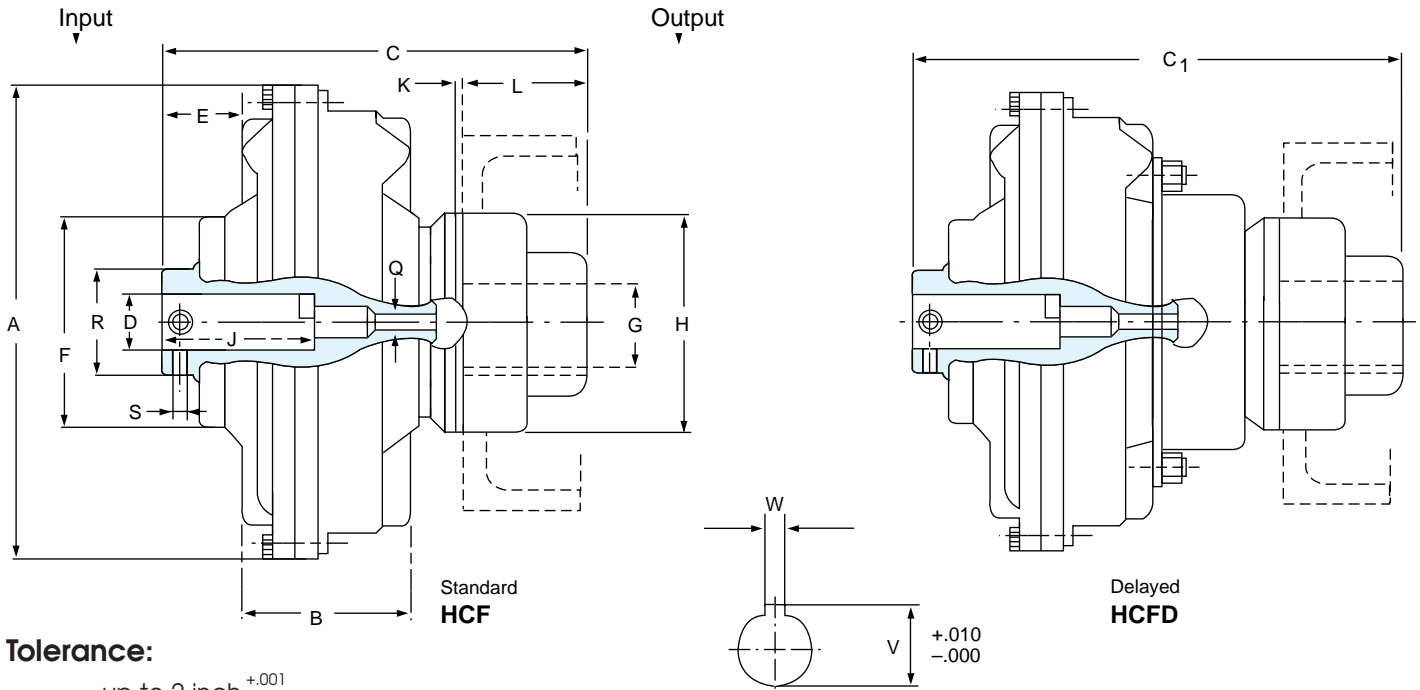


Size	A	B	D	E		F	F ₁	H	L	C	C ₁	Wt. Lb. Less Oil	Oil U.S. gal. Max	WR ² lb.ft. ²			Gear Coupling Size
				Nr.	Dia.									Outer	Inner	Outer for HCMD	
15	18.11	8.385	7.000	10	0.502	0.374	0.394	1/2-20	0.964	9.76	12.87	104 ▲ 112	2.02 ▲ 2.27	13.5	4.5	▲ 14.6	2-1/2
17	20.47	8.385	7.000	10	0.502	0.374	0.394	1/2-20	1.000	10.83	14.05	146 ▲ 158	3.09 ▲ 3.48	22.5	8.6	▲ 25.0	2-1/2
19	22.24	8.385	7.000	10	0.502	0.374	0.394	1/2-20	1.000	10.83	14.05	165 ▲ 178	3.75 ▲ 4.22	33	14.5	▲ 35.1	2 1/2
21	24.41	9.448	8.000	12	0.502	0.374	0.394	1/2-20	1.000	12.40	16.41	240 ▲ 262	5.02 ▲ 6.07	51	23	▲ 57.2	3
24	27.95	9.448	8.000	12	0.502	0.374	0.394	1/2-20	1.000	12.40	16.41	285 ▲ 307	7.50 ▲ 8.24	96	46	▲ 102.2	3
27	30.71	11.020	9.500	8	0.750	1.220	1.220	3/4-16	2.244	14.45	20.71	454 ▲ 505	11.09 ▲ 13.21	145	48	▲ 160.0	*3 1/2
29	33.86	11.020	9.500	8	0.750	1.220	1.220	3/4-16	2.244	15.59	21.85	562 ▲ 613	14.53 ▲ 16.64	220.5	66.4	▲ 235.4	*3 1/2
34	39.37	12.159	11.00	8	0.750	1.220	1.102	3/4-16	2.244	19.80	24.96	960 ▲ 978	21.80 ▲ 24.5	650	28.5	▲ 668.5	*4

▲ HCMD *Exposed Bolts

For Shaft-to-Shaft Applications

Sizes 15-34



Tolerance:

Dim D up to 2 inch $\begin{matrix} +.001 \\ -.000 \end{matrix}$
 from 2 to 4 inch $\begin{matrix} +.0015 \\ -.000 \end{matrix}$

Dim W up to .500 inch $\begin{matrix} +.002 \\ -.000 \end{matrix}$
 from .625 to 1 inch $\begin{matrix} +.003 \\ -.000 \end{matrix}$

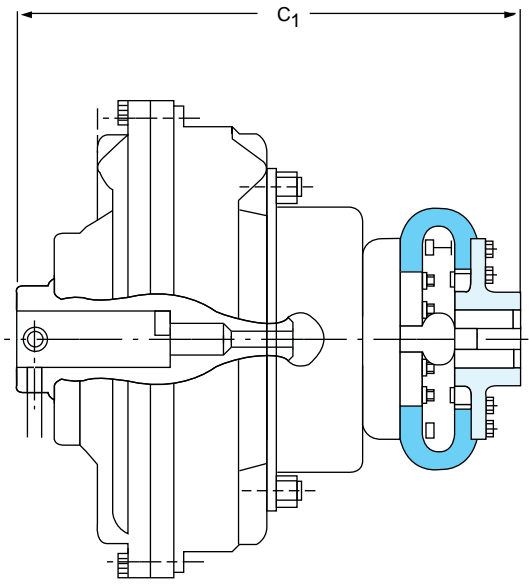
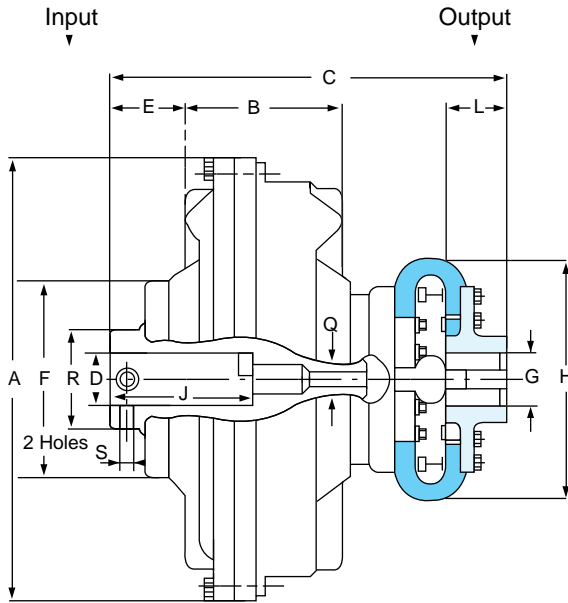
Size	D	J	W	V	A	B	C	C ₁	E	F	G Max	H	K	L	Q	R	S	Wt. Lb. Less Oil	Oil U.S. Gal. Max.
15	● 2.875 ■ 2.375	7.000	.750 .625	2.992 2.651	18.110	5.945	14.331	17.008	2.205	7.992	3.150	6.693	.118	4.331	$\frac{7}{8}$ UNC $\frac{9}{16}$ UNC	3.976	$\frac{5}{8}$ UNC $\frac{11}{16}$ UNC	110.7 ▲ 121.7	2.020 ▲ 2.272
17	● 3.375 ■ 2.875	8.250	.875 .750	3.635 3.205	20.472	6.693	15.236	18.386	2.441	8.858	3.543	9.843	.118	4.331	$1\frac{1}{4}$ UNC $\frac{7}{8}$ UNC	4.961	$\frac{3}{4}$ UNC $\frac{10}{16}$ UNC	169.7 ▲ 185.2	3.090 ▲ 3.487
19	● 3.375 ■	8.250	.875	3.365	22.244	7.480	15.236	18.386	1.653	8.858	3.543	9.843	.118	4.331	$1\frac{1}{4}$ UNC $\frac{7}{8}$ UNC	4.961	$\frac{3}{4}$ UNC $\frac{10}{16}$ UNC	185.0 ▲ 200.4	3.750 ▲ 4.227
21	● 3.875 ■ 3.375	8.500	1.000 .875	4.106 3.760	24.409	8.071	18.071	22.008	2.795	9.842	4.331	11.417	.118	5.512	$1\frac{1}{4}$ UNC $\frac{7}{8}$ UNC	5.354	$\frac{3}{4}$ UNC $\frac{10}{16}$ UNC	284.4 ▲ 308.7	5.020 ▲ 6.076
24	● 3.875 ■	8.500	1.000	4.106	27.953	9.015	18.071	22.008	1.850	9.842	4.331	11.417	.118	5.512	$1\frac{1}{4}$ UNC $\frac{7}{8}$ UNC	5.354	$\frac{3}{4}$ UNC $\frac{10}{16}$ UNC	324.0 ▲ 348.0	7.500 ▲ 8.243
27	● 4.750 ■	8.500	1.250	5.109	30.708	10.944	20.00	24.685	1.220	12.401	4.750	13.780	.157	5.905	$1\frac{3}{4}$ UNC $\frac{5}{8}$ UNC	7.283	$\frac{7}{8}$ UNC $\frac{9}{16}$ UNC	509.2 ▲ 549.0	11.09 ▲ 13.21
29	● 5.250 ■	9.500	1.250	5.617	33.858	12.007	21.102	25.748	1.220	13.780	4.750	13.780	.157	5.905	$1\frac{3}{4}$ UNC $\frac{5}{8}$ UNC	8.070	$\frac{7}{8}$ UNC $\frac{9}{16}$ UNC	627.0 ▲ 666.7	14.531 ▲ 16.645
34	● 5.938 ■	10.438	1.500	6.346	39.370	14.881	23.622	28.780	1.732	15.748	6.250	16.732	.197	5.905	$1\frac{3}{4}$ UNC $\frac{5}{8}$ UNC	7.874	$\frac{1}{8}$ UNC $\frac{8}{16}$ UNC	1019 ▲ 1059	21.8 ▲ 24.5

- ▲ HCFD
- Max Bore
- With Reduced Depth Keyway

Model HCR

For Shaft-to-Shaft Applications

Sizes 15-34



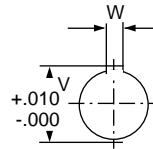
Tolerance:

Dim D up to 2 inch $+0.001$
 -0.000
 from 2 to 4 inch $+0.0015$
 -0.000

Dim W up to .500 inch $+0.002$
 -0.000
 from .625 to 1 inch $+0.003$
 -0.000

**Standard
HCR**

**Delayed
HCRD**



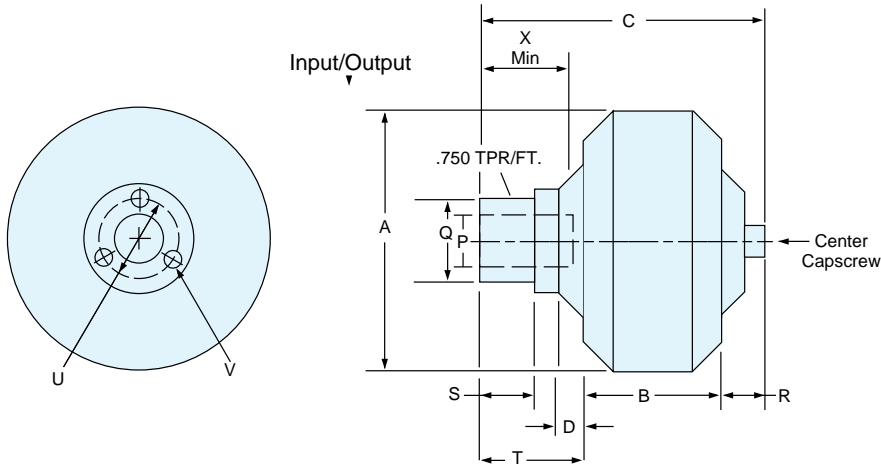
When ordering units please specify
 Dim.-D Diameter (G upon request)

Size	D	J	W	V	A	B	C	C ₁	E	F	G	H	L	Q	R	S
Max.																
15	● 2.875	7.000	.750	2.992	18.110	5.945	15.275	17.952	2.205	7.992	2.756	9.252	3.149	7/8 9 UNC	3.976	5/8 11 UNC
15	■ 2.375	5.625	.625	2.651	18.110	5.945	15.275	17.952	2.205	7.992	2.756	9.252	3.149		3.976	
15	■ 2.125	5.000	.500	2.350	18.110	5.945	15.275	17.952	2.205	7.992	2.756	9.252	3.149		3.976	
17	● 3.375	8.250	.875	3.635	20.472	6.693	15.945	19.094	2.441	8.858	2.952	11.338	3.543	1-1/4 7 UNC	4.961	3/4 10 UNC
17	■ 2.875	7.000	.750	3.205	20.472	6.693	15.945	19.094	2.441	8.858	2.952	11.338	3.543		4.961	
19	● 3.375	8.250	.875	3.635	22.244	7.480	15.945	19.094	1.653	8.858	2.952	11.338	3.543		4.961	
19	■ 2.875	7.000	.750	3.205	22.244	7.480	15.945	19.094	1.653	8.858	2.952	11.338	3.543	4.961		
21	● 3.875	8.500	1.000	4.106	24.409	8.071	20.551	24.488	2.795	9.842	3.543	14.882	4.331	5.354	1-3/4 5 UNC	
21	■ 3.375	8.250	.875	3.760	24.409	8.071	20.551	24.488	2.795	9.842	3.543	14.882	4.331	5.354		
24	● 3.875	8.500	1.000	4.106	27.953	9.015	20.551	24.488	1.850	9.842	3.543	14.882	4.331	5.354		7/8 9 UNC
27	● 4.750	8.500	1.250	5.109	30.708	10.944	21.653	26.299	1.220	12.401	3.937	18.189	4.803	7.283		
29	● 5.250	9.500	1.250	5.617	33.858	12.007	23.622	28.267	1.220	13.780	4.724	20.866	5.708	8.070	1 8 UNC	
34	● 5.938	10.438	1.500	6.346	39.370	14.881	26.889	32.046	1.732	12.13	5.500	24.803	6.496	9.84		

● Max Bore
 ■ With Reduced Depth Keyway

For Parallel Shaft Applications

Sizes 7.0-12.4



P = Standard Input Sizes

Size	Bore	Key
7.0	7/8	3/16
	1	1/4
	1 1/8	1/4
	1 3/8	5/16
Size	Bore	Key
9.4	1 1/8	1/4
	1 3/8	5/16
	1 5/8	3/8
Size	Bore	Key
12.4	1 5/8	3/8
	1 7/8	1/2
	2 1/8	1/2
	2 3/8	5/8

Size	A	B	C	D	Q	R	S	T	U	V	X	Q.D. Hub Size	Dry Wt.
7	7.81	3.67	7.05	.56	2.149	.84	1.15	2.54	2.687	1/2-20	2.00	SD	12.75
9.4	10.25	4.70	9.35	.77	2.736	1.12	1.45	3.53	3.313	5/16-18	2.50	SK	37.75
12.4	13.50	5.98	12.12	.82	3.736	1.24	1.87	4.90	5.000	1/2-13	3.00	E	68.00

Do not use Eaton QD sheaves.
Bolt pattern is not the same.

Vertical Mounting For HSD

When mounting the 7.0, 9.4 or 12.4 HSD on a vertical shaft, the motor and collet should be mounted above the sheave and fluid coupling. This position insures even the smallest oil fill will react with the motor.

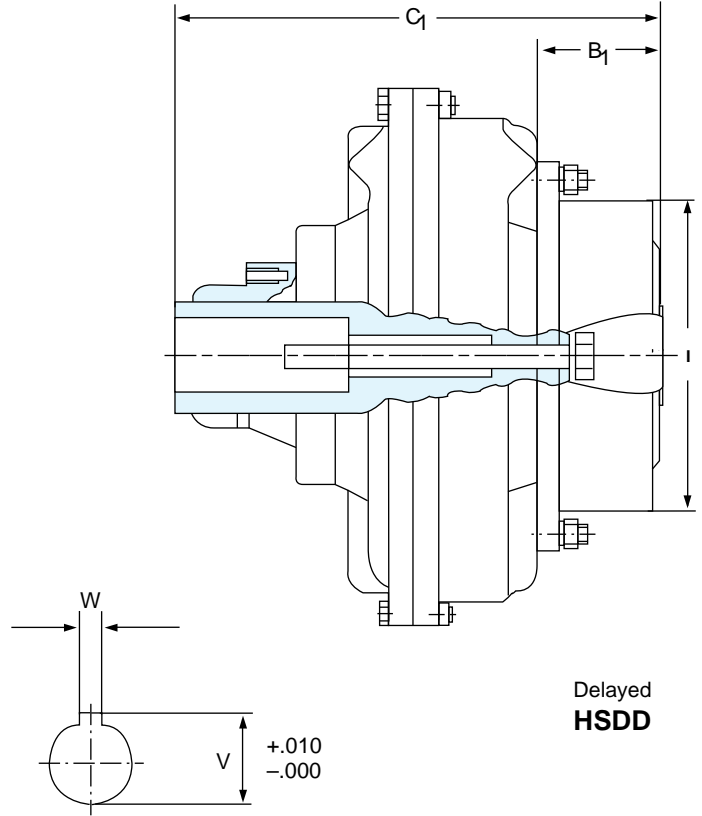
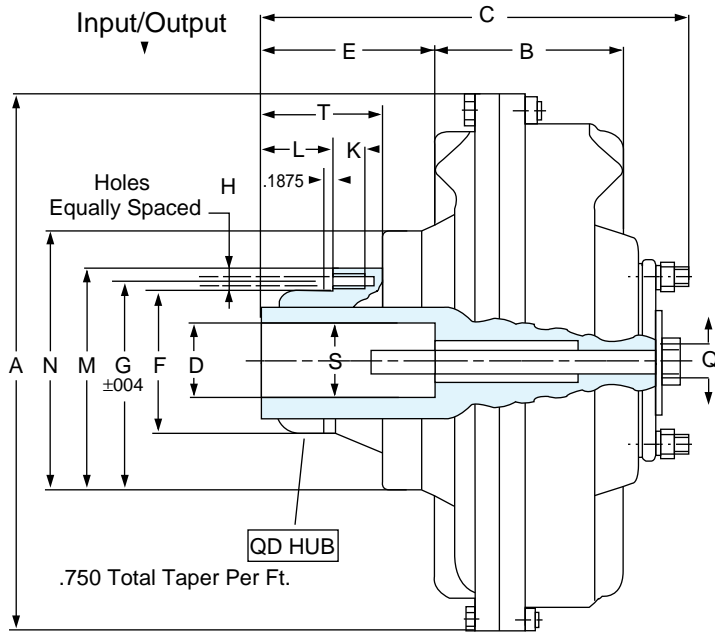
Furthermore, order the unit with the standard and optional fill plugs on both sides of the unit. This allows for the addition and maintenance of the oil level within the fluid coupling.

HSD	Maximum Speed
7.0	3600 RPM
9.4	2600 RPM
12.4	1800 RPM

Important note:

Size	Center Capscrew Torque
7.0	38-42 ft-lbs
9.4 and 12.4	177- 195 ft-lbs

Sizes 15-24



Tolerance:

Dim D	up to 2 inch	$\begin{matrix} +.001 \\ -.000 \end{matrix}$
	from 2 to 4 inch	$\begin{matrix} +.0015 \\ -.000 \end{matrix}$
Dim W	up to .500 inch	$\begin{matrix} +.002 \\ -.000 \end{matrix}$
	from .625 to 1 inch	$\begin{matrix} +.003 \\ -.000 \end{matrix}$

Standard
HSD

Delayed
HSDD

Size	D	J	W	V	A	B	B ₁	C Max	C ₁	E	F	G	H Nr.	Dia.	I	K	L	M	N	Q	T	S	QD Hub Size	Wt. Less Oil	Oil US Gal Max
15	2.875	7.000	.750	2.992	18.110	5.945	3.425	15.118	17.244	7.677	4.4375	5.625	3	9/16 UNC	10.039	1.181	3.397	6.663	8.032	7/8 UNC	6.362	3/4 10 UNC	F	107	2.02
15	2.375	5.625	.625	2.651	18.110	5.945	3.425	15.118	17.244	7.677	4.4375	5.625	3		10.039	1.181	3.397	6.663	8.032		6.362		▲ 115.8	▲ 2.27	
17	3.375	8.250	.875	3.635	20.472	6.693	3.779	17.913	20.315	9.654	5.1484	6.250	3		12.992	1.378	4.331	7.25	8.976		8.449		J	156	3.09
17	2.875	7.000	.750	3.205	20.472	6.693	3.779	17.913	20.315	9.654	5.1484	6.250	3	5/8 11 UNC	12.992	1.378	4.331	7.25	8.976		8.449			▲ 169.2	▲ 3.48
19	3.375	8.250	.875	3.635	22.244	7.480	3.779	17.913	20.315	8.858	5.1484	6.250	3		12.992	1.378	4.331	7.25	8.976	1-1/4 7 UNC	8.449	7/8 9 UNC	J	174	3.75
19	2.875	7.000	.750	3.205	22.244	7.480	3.779	17.913	20.315	8.858	5.1484	6.250	3		12.992	1.378	4.331	7.25	8.976		8.449			▲ 187.2	▲ 4.22
21	3.875	8.500	1.000	4.314	24.409	8.071	4.330	21.456	24.408	11.811	6.500	7.875	4		15.748	1.575	7.085	9.00	9.842		10.236		M	270	5.02
21	3.375	8.250	.875	3.760	24.409	8.071	4.330	19.882	22.833	10.236	6.500	7.875	4	3/4 10 UNC	15.748	1.575	5.511	9.00	9.842		8.661			▲ 292	▲ 6.08
24	3.875	8.500	1.000	4.314	27.953	9.015	4.330	21.456	24.408	10.866	6.500	7.875	4		15.748	1.575	7.085	9.00	9.842		10.236		M	307	7.50
																								▲ 329	▲ 8.24

- ▲ HSDD
- Max Bore
- With Reduced Depth Keyway