

Dimensions (mm)

Model	A	B	F	G	H	J	K	L	M	N	P
		H.C.					DEG				
200	11.61 (295)	10.236 (260)	.24 (6)	1/2 (M12)	.98 (25)	1.97 (50)	40° (40°)	7.01 (178)	N/A (N/A)	2.76 (70)	7.19 (182.5)
280	16.14 (410)	13.976 (355)	0	5/8 (M16)	1.18 (30)	2.36 (60)	20° (20°)	7.56 (192)	0.37 (9.5)	3.15 (80)	9.47 (240.5)

Pilot Mounting Dimensions "C" and "D" (mm)		
Model	Mounting Pilot	Mounting Bolts Qty. and Size
Dim. "C"		
200	8.661 +.003/-0.000 (220 +.08/-00)	3 @ 1/2 - 13 UNC (3 @ M12 x 1-3/4)
Dim. "D"		
280	6.890 +.003/-0.000 (175 +.08/-00)	3 @ 5/8 - 11 UNC (3 @ M16 x 2)

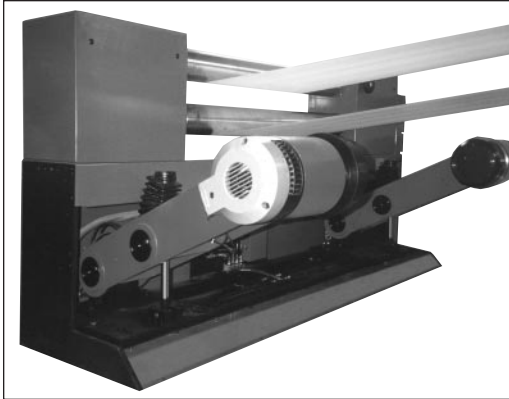
Actuator/Inlet				
Model	No. of Actuators	No. of Air Inlets	No. of Actuators Per Air Inlets	
			AA	BB
200/2	2	2	2	0
200/4	4	2	2	2
200/6	6	2	2	4
280/3	3	2	3	0
280/6	6	2	3	3
280/9	9	2	3	6

Bore and Keyway Dimension "E" (mm)			
Model	Minimum Bore (No Keyway)	Maximum Bore with Keyway	
200	1.00 (25)	2 3/8 (60)	5/8 x 7/32 (18 x 4.4)
280	1.00 (25)	2 5/8 (65)	3/4 x 1/4 (18 x 4.4)

Note: For mounting, use socket head cap screws conforming to the ASTM-574-97a or ASTM-574M-97a (Metric Version).

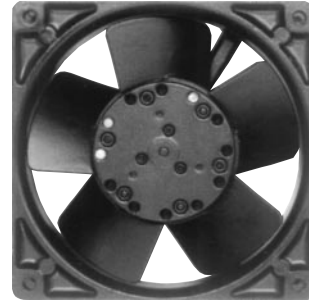
Front Cover Removal

By removing just three cap screws, the Mistral's front cover can be detached for easy and fast access to internal parts. Cover removal automatically disconnects both air and electricity.

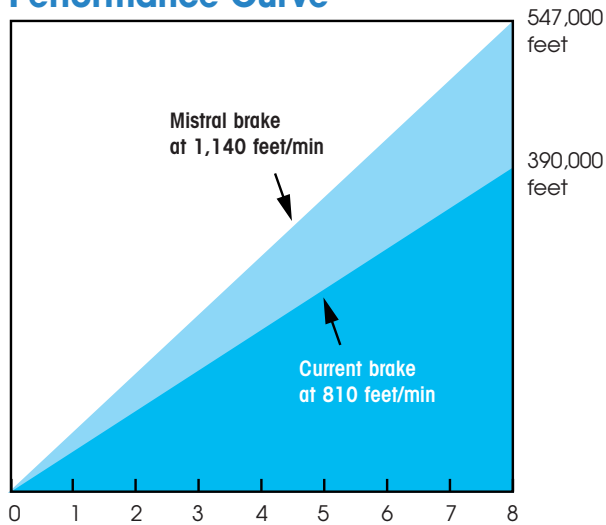


Integral Cooling

A rugged, high performance, low energy usage fan is housed within the brake for high heat dissipation — a must for increased productivity through controlled tension at many roll speeds.



Performance Curve



Fan Data and Connection Data

Model	Fan Voltages	Fan Power	Electric	Pneum.
200	220VAC or/order	20W	M16	1/8 BSP
	110VAC or/order		PG9	1/8 BSP
	24VDC		3/8 NPT	1/8 NPT
280	220VAC or/order	18W	M16	1/8 BSP
	110VAC or/order		PG9	1/8 BSP
	24VDC		3/8 NPT	1/8 NPT

Model	Dynamic Slipping Torque Capacity				Heat Transfer Capacity				Maximum Speed (rev./min.)	Inertia of Rotating Parts		Weight				Fan Power Rating (W)
	Air Pressure (lb.in.)		(Nm)		Continuous Operation		:30 On/:30 Off Operation			Wr ²	J=mr ²	Total Brake		Rotating Parts		
	min.* 3 psi	max. 80 psi	min.* 0.2 BAR	max. 5.5 BAR	(hp)	(kW)	(hp)	(kW)		(lb.ft. ²)	(kgm ²)	(lb.)	(kg)	(lb.)	(kg)	
Mistral	min.* 3 psi	max. 80 psi	min.* 0.2 BAR	max. 5.5 BAR	(hp)	(kW)	(hp)	(kW)	(rev./min.)	(lb.ft. ²)	(kgm ²)	(lb.)	(kg)	(lb.)	(kg)	(W)
200/2/LC	35	1770	4	200	3.2	2.4	3.5	2.6	2860	0.40	0.017	77	35	9.92	4.5	20
200/2	45	2655	5	300	3.2	2.4	3.5	2.6	2860	0.40	0.017	77	35	9.92	4.5	20
200/4/LC	35*	3540	4*	400	3.2	2.4	3.5	2.6	2860	0.40	0.017	77	35	9.92	4.5	20
200/4	45*	5310	5*	600	3.2	2.4	3.5	2.6	2860	0.40	0.017	77	35	9.92	4.5	20
200/6/LC	35*	5310	4*	600	3.2	2.4	3.5	2.6	2860	0.40	0.017	77	35	9.92	4.5	20
200/6	45*	7965	5*	900	3.2	2.4	3.5	2.6	2860	0.40	0.017	77	35	9.92	4.5	20
280/3/LC	45	3540	5	400	6.4	4.8	7	5.2	2090	1.80	0.076	110	50	20.72	9.4	25
280/3	55	5310	6	600	6.4	4.8	7	5.2	2090	1.80	0.076	110	50	20.72	9.4	25
280/6/LC	45*	7080	5*	800	6.4	4.8	7	5.2	2090	1.80	0.076	110	50	20.72	9.4	25
280/6	55*	10620	6*	1200	6.4	4.8	7	5.2	2090	1.80	0.076	110	50	20.72	9.4	25
280/9/LC	45*	10620	5*	1200	6.4	4.8	7	5.2	2090	1.80	0.076	110	50	20.72	9.4	25
280/9	55*	15930	6*	1800	6.4	4.8	7	5.2	2090	1.80	0.076	110	50	20.72	9.4	25

* With only one set of actuators engaged

Specifications

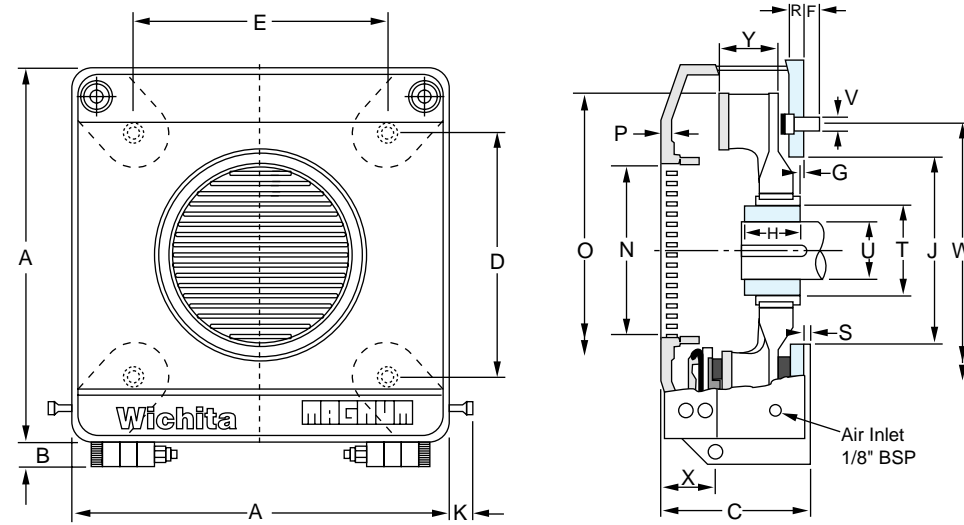
Model No.	Dynamic Slipping Torque Cap. lb.in. ⁽¹⁾		Brake	Heat Transfer Capacity for Continuous Operation HP ⁽²⁾				Maximum Speed (rpm)		Inertia of brake disc + hub lb.ft. ²	Weight	
	Min 3 PSI	Max 80 PSI		50 rpm	100 rpm	200 rpm	500 rpm	Medium Speed brake disc (rpm)	High Speed brake disc (rpm)		Total Brake lb.	Brake disc + Hub lb.
260/1LC	17	440	Mag.	1.3	1.5	1.9	2.9	2530	4427	.74	31	13.7
260/1	26	660										
260/2LC	43	880										
260/2	60	1320										
260/3LC	60	1320										
260/3	85	1980										
260/4LC	85	1760										
260/4	113	2640	Mag.+	1.7	2.1	2.8	4.0	FAN	FAN	FAN	FAN	
340/1LC	35	687	Mag.	2.3	2.7	3.3	4.7	2040	3570	2.4	45	23
340/1	43	1030										
340/2LC	70	1373	Mag. Thin	1.1	1.3	1.6	2.6					
340/2	86	2060										
340/3LC	95	2060	Mag. Thin	2.4	2.5	2.7	3.1					
340/3	129	3090										
340/4LC	129	2748	Mag. B	3.6	4.0	4.8	5.6					
340/4	172	4120										
340/5LC	163	3435	Mag.+	3.9	4.3	5	5.7					
340/5	215	5150										
340/6LC	198	4120	Mag.+	3.9	4.3	5	5.7					
340/6	258	6180										
400/2LC	86	1774	Mag.	3.5	4.0	5.2	8.8	1712	2996	5.7	71	41
400/2	113	2660										
400/3LC	129	2660										
400/3	172	3990										
400/4LC	172	3548										
400/4	225	5320										
400/5LC	215	4435										
400/5	286	6650										
400/6LC	252	5322	Mag.+	6.0	7.0	8.4	9.4					
400/6	238	7980										
400/7LC	285	6210	Mag.+	6.0	7.0	8.4	9.4					
400/7	400	9310										
400/8LC	338	7096	Mag.+	6.0	7.0	8.4	9.4					
400/8	451	10640										
500/2LC	113	2360	Mag.	4.7	6.0	8.7	14.7	1308	2289	17	127	60
500/2	146	3540										
500/3LC	172	3540										
500/3	225	5310										
500/4LC	225	4720										
500/4	304	7080										
500/5LC	286	5900										
500/5	382	8850										
500/6LC	338	7080	Mag.+	10.7	12.0	13.4	16.8					
500/6	451	10620										
500/7LC	400	8260	Mag.+	10.7	12.0	13.4	16.8					
500/7	530	12390										
500/8LC	451	9440	Mag.+	10.7	12.0	13.4	16.8					
500/8	608	14160										

⁽¹⁾ The dynamic slipping torque range for a given brake model can be changed by switching the actuators in or out by means of the hand slide valves provided e.g. a 340/3 to a 340/2 or a 340/1.

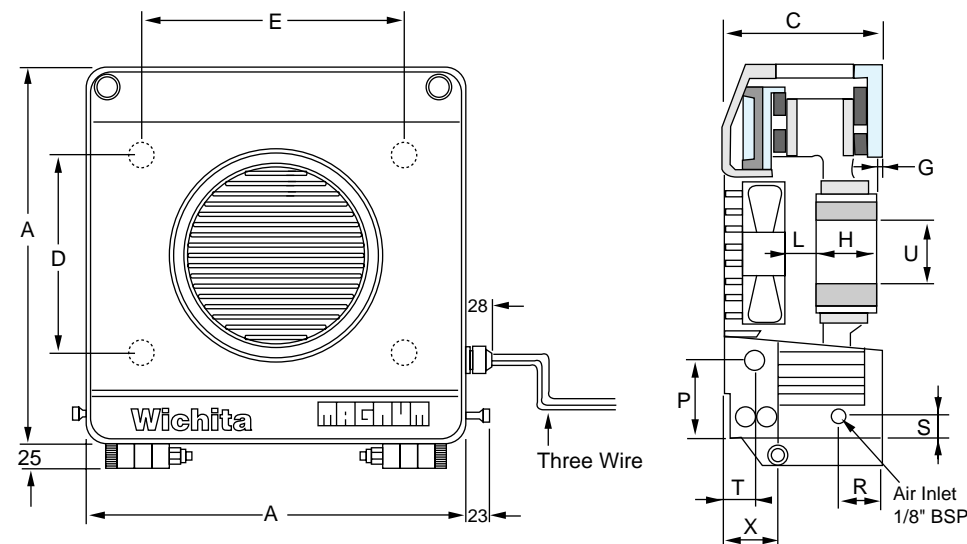
⁽²⁾ The heat transfer ratings in the above chart assume a forward rotation of the brake disc. For reverse rotation the heat ratings of models Magnum 260 and Magnum 340 should be reduced by 15%. If in doubt please contact your Wichita engineer.

Magnum Brakes

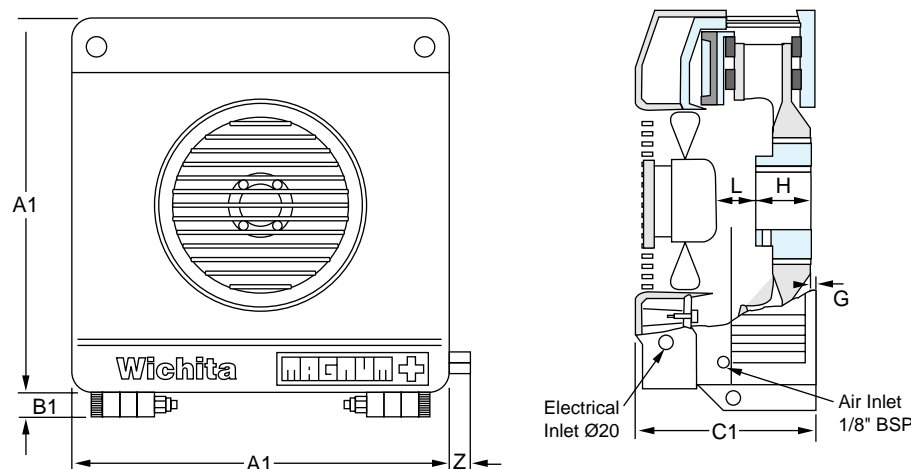
Magnum



New!
Magnum B



Magnum Plus



Dimensions (mm) (Consult factory for drawing before final layout.)

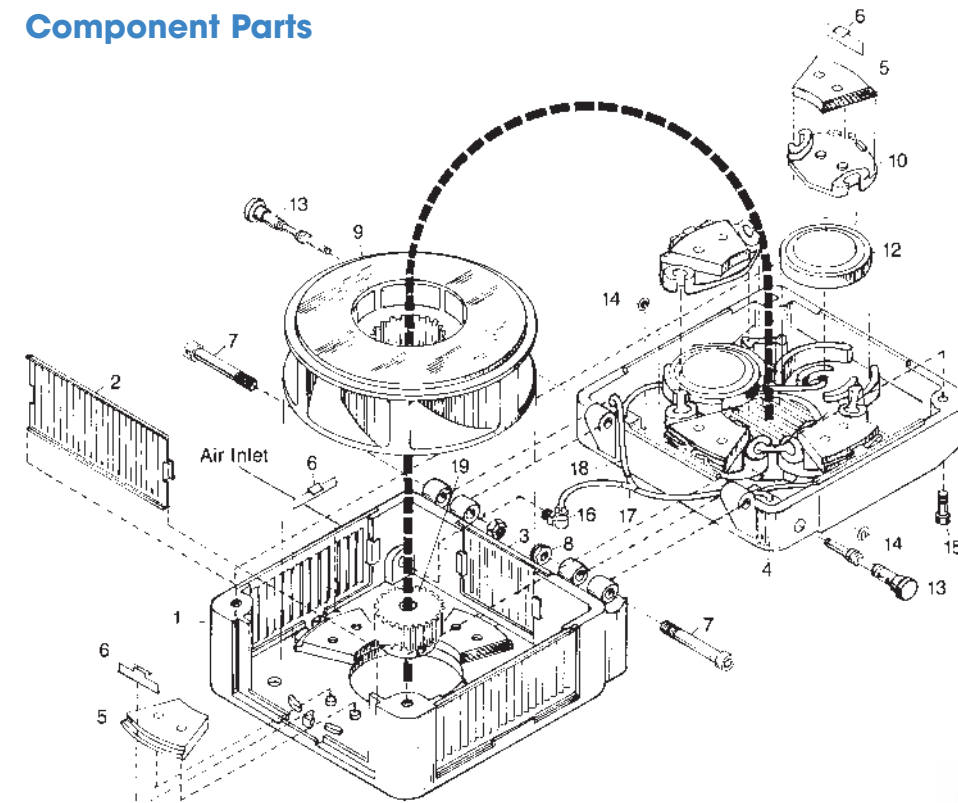
Model No.	A	A1	B	B1	C	C1	D	E	F	G	H	J	K
260	10.4 (264)	10.6 (270)	1.0 (25)	0.8 (20)	5.7 (145)	7.7 (195)	7.0 (176.8)	7.0 (176.8)	0.8 (20)	0.2 (5)	2.2 (55)	3.9 (100)	0.9 (23)
340	13.6 (346)	13.8 (350)	1.0 (25)	0.8 (20)	5.7 (145)	8.0 (205)	5.5 (140.0)	9.5 (242.5)	0.9 (22)	0.2 (5)	2.2 (55)	6.9 (175)	0.9 (23)
340 Thin	13.6 (346)	13.8 (350)	1.0 (25)	0.8 (20)	5.12 (130)	8.0 (205)	5.5 (140.0)	9.5 (242.5)	0.9 (22)	0.2 (5)	2.2 (55)	6.9 (175)	0.9 (23)
400	16 (406)	16.1 (410)	1.0 (25)	0.8 (20)	5.7 (145)	7.7 (195)	10.4 (265.2)	10.4 (265.2)	1.1 (27)	0.2 (5)	2.4 (60)	7.9 (200)	0.9 (23)
500	19.9 (506)	2.0 (510)	1.1 (28)	0.8 (20)	5.7 (150)	8.0 (205)	13.3 (339.4)	13.3 (339.4)	1.2 (30)	0.2 (5)	2.4 (60)	12.6 (320)	0.9 (23)

Model No.	L	N	O	P	R	S	T	U		V	W PCD	X	Y	Z
								Min	Max					
260	2.0 (50)	3.7 (95)	9.0 (230)	.24 (6)	.59 (15)	.20 (5)	2.44 (62)	.59 (15)	1.77 (45)	4 off-M12 X 35	9.84 (250)	1.969 (50)	2.36 (60)	.47 (12)
340	2.0 (50)	5.5 (14)	11.0 (280)	.24 (6)	.51 (13)	.28 (7)	3.62 (92)	.98 (25)	2.24 (57)	4 off-M12 x 30	11.02 (280)	1.969 (50)	2.32 (59)	.47 (12)
340 Thin	2.0 (50)	5.5 (14)	11.0 (280)	.24 (6)	.51 (13)	.28 (7)	3.62 (92)	.98 (25)	2.24 (57)	4 off-M12 x 30	11.02 (280)	1.969 (50)	2.32 (59)	.47 (12)
400	1.0 (25)	7.9 (200)	13.4 (340)	.31 (8)	.51 (13)	.12 (3)	4.69 (119)	1.38 (35)	2.56 (65)	4 off-M16 x 40	14.76 (375)	2.047 (52)	2.36 (60)	.47 (12)
500	1.0 (25)	11.1 (283)	17.5 (445)	.44 (11)	.59 (15)	.08 (2)	5.6 (140)	1.38 (35)	4.08 (102)	4 off-M20 x 45	18.1 (480)	2.2 (55)	2.32 (59)	.47 (12)

Certified prints showing exact dimensions are sent with every order acknowledgement, and these should always be obtained before finalizing any design detail.

Note: For mounting, use socket head cap screws conforming to the ASTM-574-97a or ASTM-574M-97a (Metric Version).

Component Parts



1. Back Casing
2. Side Guard
3. Side Guard
4. Front Casing
5. Friction Pad
6. Retaining Clip
7. Socket Head Bolt
8. Self-locking Nut
9. Brake Disc
10. Carrier Plate
12. Actuator Assembly
13. Air Valve
14. Retaining Ring
15. Socket Head Bolt
16. 90° Elbow
17. "Y" Connector
18. Air Hose
19. Hub